

MAGNETIC REED SWITCH

SPECIFICATIONS:

Current Rating:		.5A @ 100VDC	
Initial Contact Resistance:		300 Meg ohm (Max.)	
Operating Gap:		1.25" Max	
Mounting Centers:		2.094" (2-3/32")	
Mounting Hole:		.15" (Max.)	
Terminal Type:		Screw	
Part No.	Type	Action	Actuator
30-17050	SPST	N.C (Normally closed) when magnet is within actuation range	Magnet



SPECIFICATIONS:

Current Rating:		0.5A @ 20V DC, 10 Watts (Max.)	
Voltage Rating:		120V AC (Max.) @ 0.08A 80V DC (Max.) @ 0.1A	
Contact Material:		Iron Alloy - Gold Plate	
Terminal Material:		Plated Steel	
Terminal Type:		Screw	
Part No.	Type	Action	Actuator
30-10072	SPDT	Normally open w/o magnet Normally closed w/o magnet	Magnet

N.O./N.C. MAGNETIC REED SWITCH

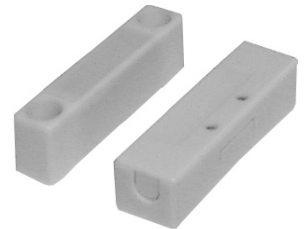


Mounting Center: 2.125"

SPECIFICATIONS:

Current Rating:		.5A @ 100VDC/125VAC	
Initial Contact Resistance:		300 Meg ohm (Max.)	
Operating Gap:		.90" Max	
Mounting Centers:		1.56" (1-9/16")	
Mounting Hole:		.134" (Max.)	
Terminal Type:		Screw	
Part No.	Type	Action	Actuator
30-17051	SPST	N.O. (Normally Open) when magnet is within actuation range	Magnet

MAGNETIC REED SWITCH



SPECIFICATIONS:

Current Rating:		.5A @ 100VDC/125VAC	
Initial Contact Resistance:		300 Meg ohm (Max.)	
Operating Gap:		.60"-1.5"	
Mounting Centers:		1"	
Mounting Hole:		.125" (Max.)	
Terminal Type:		10" Leads, 24 AWG	
Part No.	Type	Action	Actuator
30-17054	SPST	N.O. (Normally Open) when magnet is within actuation range	Magnet

LOW PROFILE MAGNETIC REED SWITCH

